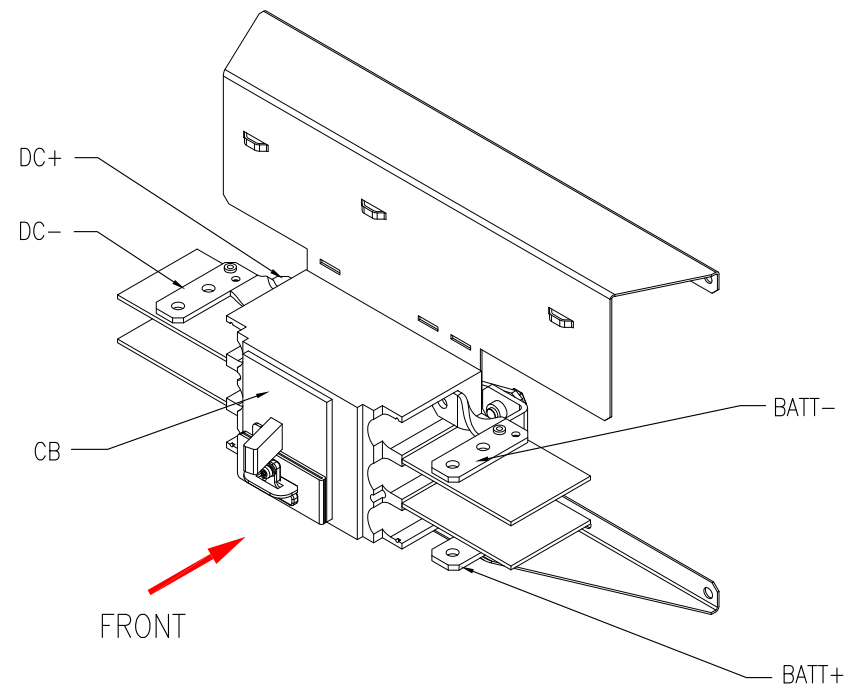


EXTERNAL ISOMETRIC VIEW



INTERNAL DIMETRIC VIEW

SPECIFICATIONS:

Battry breaker	LV438980
Maximum configuration	4 hour runtime
Battery Type	Lead-acid
Maximum Voltage (V)	576
Maximum battery short circuit level (kA)	35
Maximum short circuit current to trip circuit breaker (A)	1250

UPS Rating (kW)	Trip Setting (A)	
	I _r	I _m
20 - 60	175	1250
80	225	



Recommended Cable Sizes

	20 - 60kW		80kW	
	Copper	Aluminium	Copper	Aluminium
Battery +/- (mm ²)	50mm ²	70mm ²	70mm ²	NA
Battery PE (mm ²)	25mm ²	35mm ²	35mm ²	NA

NOTES:

1. INSTALLATION SHALL COMPLY WITH ALL APPLICABLE NATIONAL, STATE AND LOCAL ELECTRICAL REGULATIONS.
2. REFER TO PRODUCT DOCUMENTATION FOR ADDITIONAL DETAILS PRIOR TO INSTALLATION AND SITE PREPARATION WORK.
- △ 3. CABLE SIZES ARE BASED ON TABLE B.52.5 OF IEC 60364-5-52 WITH THE FOLLOWING ASSERTIONS:
 - a) 90°C CONDUCTORS.
 - b) AN AMBIENT TEMPERATURE OF 30°C [86°F].
 - c) USE OF COPPER OR ALUMINIUM CONDUCTORS.
 - d) INSTALLATION METHOD 'C'
 IF THE AMBIENT TEMPERATURE IS GREATER THAN 30°C [86°F], LARGER CONDUCTORS ARE TO BE SELECTED IN ACCORDANCE WITH THE CORRECTION FACTORS OF THE IEC.
4. THIS BATTERY BREAKER KIT MUST ONLY BE USED WITH Galaxy VS UPS.
5. COMPATIBLE WITH BATTERY CABINETS: GVEBC7 AND GVEBC11.
6. SOME STRUCTURAL DETAILS HAVE BEEN OMITTED FOR THE PURPOSE OF CLARITY.

THIS DRAWING AND SPECIFICATIONS HEREIN ARE THE PROPERTY OF SCHNEIDER ELECTRIC AND SHALL NOT BE COPIED, REPRODUCED OR USED IN WHOLE OR IN PART, AS THE BASIS FOR THE MANUFACTURE OR SALE OF ITEMS WITHOUT WRITTEN PERMISSION FROM SCHNEIDER ELECTRIC. THIS DRAWING IS BASED UPON LATEST AVAILABLE INFORMATION AND IS SUBJECT TO CHANGE WITHOUT NOTICE.

Schneider Electric

TITLE: Galaxy VS
BATTERY BREAKER KIT FOR 20 - 80kW
ISOMETRIC VIEW

DWG NO: GVSBBK20K80H

REV. 0

DRAWN: JAYAPRAKASH 03-DEC-19

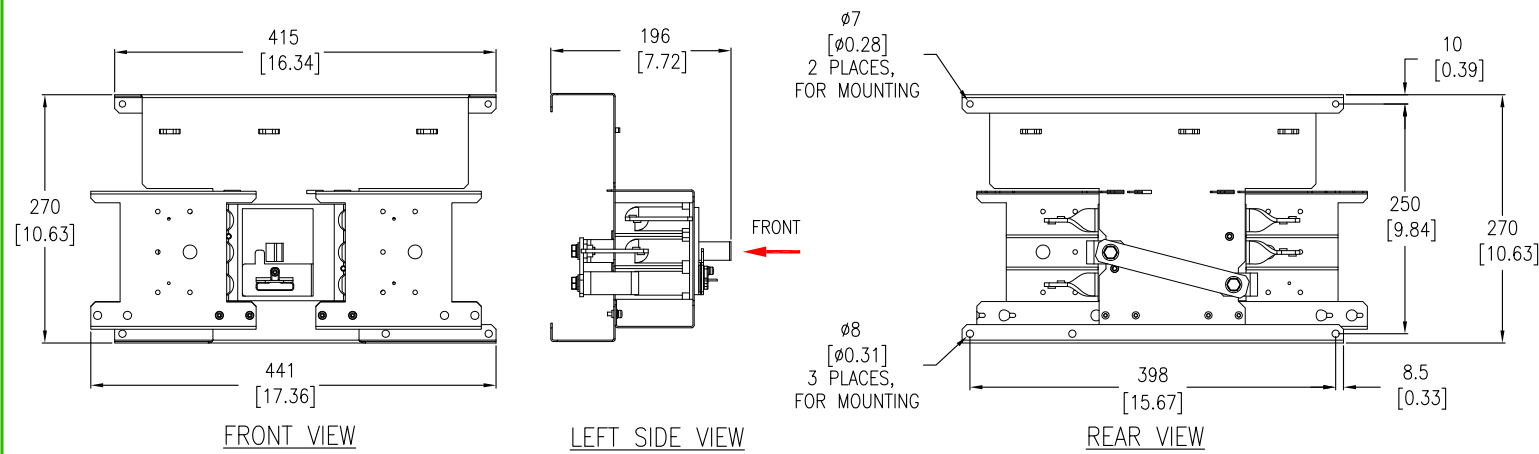
ENGINEER: Terry 03-DEC-19

APPROVED: Jiachenlin 03-DEC-19

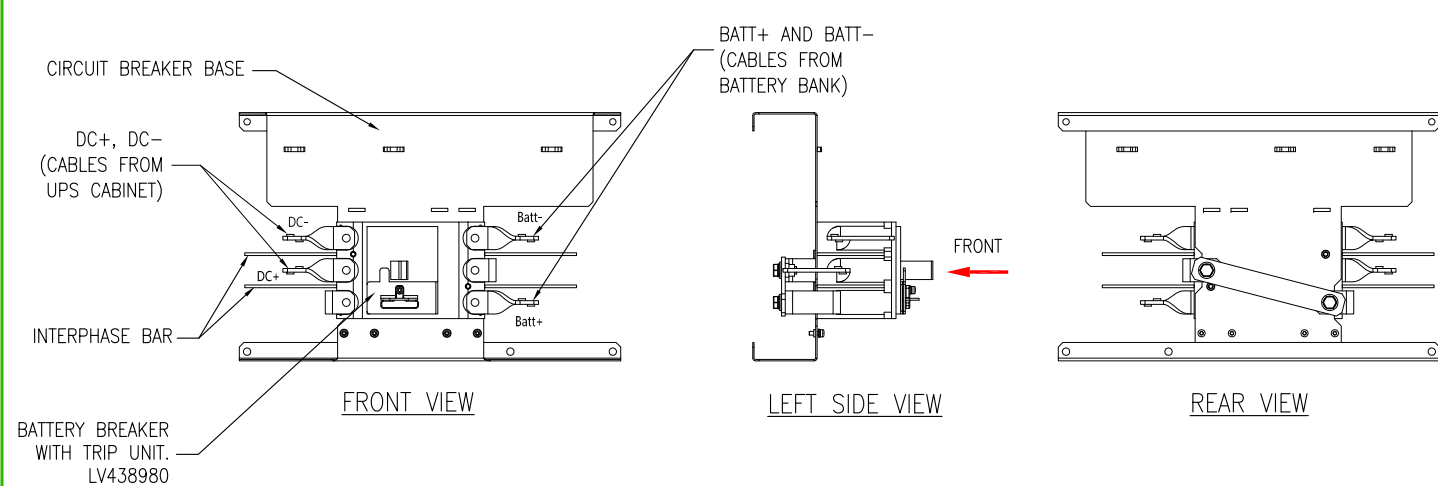
PROJECT: SUBMITTAL DRAWINGS SHEET 1 OF 2

FIRST
ANGLE
PROJECTION

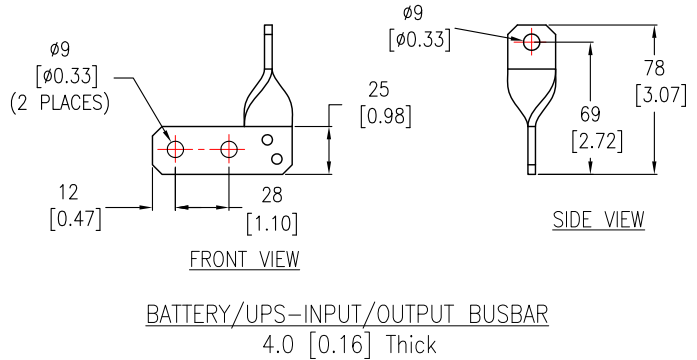
EXTERNAL VIEWS



INTERNAL VIEWS



BUSBAR DETAILS



NOTES:
1. INSTALLATION SHALL COMPLY WITH ALL APPLICABLE NATIONAL, STATE AND LOCAL ELECTRICAL REGULATIONS.
2. REFER TO PRODUCT DOCUMENTATION FOR ADDITIONAL DETAILS PRIOR TO INSTALLATION AND SITE PREPARATION WORK.
3. ALL DIMENSIONS ARE IN MILLIMETERS [INCHES].
4. THE WEIGHT OF THE UNIT IS 7 kg [15.43 lb] WITHOUT PACKING.

THIS DRAWING AND SPECIFICATIONS HEREIN ARE THE PROPERTY OF SCHNEIDER ELECTRIC AND SHALL NOT BE COPIED, REPRODUCED OR USED IN WHOLE OR IN PART, AS THE BASIS FOR THE MANUFACTURE OR SALE OF ITEMS WITHOUT WRITTEN PERMISSION FROM SCHNEIDER ELECTRIC. THIS DRAWING IS BASED UPON LATEST AVAILABLE INFORMATION AND IS SUBJECT TO CHANGE WITHOUT NOTICE.



TITLE: Galaxy VS
BATTERY BREAKER KIT FOR 20 - 80kW
GENERAL ARRANGEMENT
PROJECT: SUBMITTAL DRAWINGS SHEET 2 OF 2

DWG NO: GVSBBK20K80H
DRAWN: JAYAPRAKASH
ENGINEER: Terry
APPROVED: Jiachenlin

REV. 0
FIRST ANGLE PROJECTION